



MOUNTING CONSTRUCTIONS FOR PHOTOVOLTAIC PANELS

CATALOG

EC DECLARATION OF CONFORMITY

No. 01/2023/EN

with the European Directives: LVD 2014/35/EU; RoHS 2011/65/UE

AH Hardt sp.j.
Cholerzyn 215, 32-060 Liszki

We hereby declare under our sole responsibility that the product:

Steel, aluminum and plastic elements for mounting photovoltaic panels and running cables in photovoltaic installations

to which this declaration of conformity applies is consistent with legal acts:

- **Directive 2014/35/EU of the European Parliament and of the Council** of 26 February 2014 on the harmonisation of the laws of the Member States relating to the making available on the market of electrical equipment designed for use within certain voltage limits
- **Directive 2011/65/EU of the European Parliament and of the Council** of 8 June 2011 on the restriction of the use of certain hazardous substances in electrical and electronic equipment and Directive (EU) 2015/863 of 31 March 2015 amending Annex II to Directive 2011/65/EU of the European Parliament and of the Council as regards the list of restricted substances

Standards applicable to the product covered by this Declaration of Conformity:

Harmonized standards

Number	Title
PN-EN IEC 61914:2022-05	Cable cleats for electrical installations
PN-EN 1090-2:2018-09 +Ap1:2021-02	Execution of steel structures and aluminium structures -- Part 2: Technical requirements for steel structures
PN-EN 1090-3:2019-05	Execution of steel structures and aluminium structures -- Part 3: Technical requirements for aluminium structures
PN-EN IEC 63000:2019-01	Technical documentation for the assessment of electrical and electronic products with respect to the restriction of hazardous substances

The last two digits of the year in which the CE marking was affixed to the product:23

Cholerzyn, 2023-06-23 Place and date of issue	<p>Owner Adam Hardt</p> <p>WŁAŚCICIEL</p> <p><i>Adam Hardt</i> Name, surname and signature of the authorized person</p>
---	---

SYSTEMY ODGROMOWE
AH Hardt sp.j.
32-060 Liszki, Cholerzyn 215
tel. 12 658-66-77/88
NIP: 6790168262

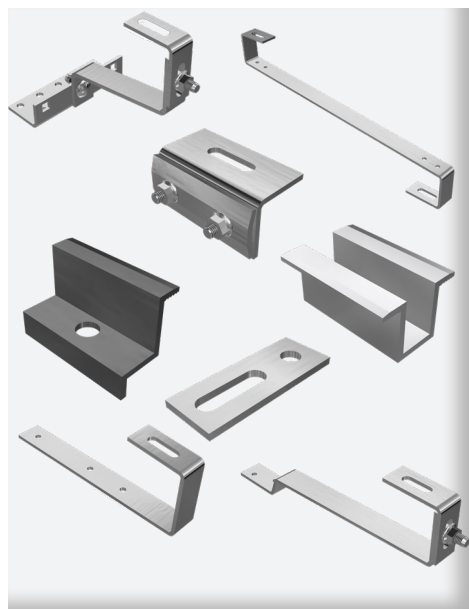
TABLE OF CONTENTS



FASTENERS

p. 2-3

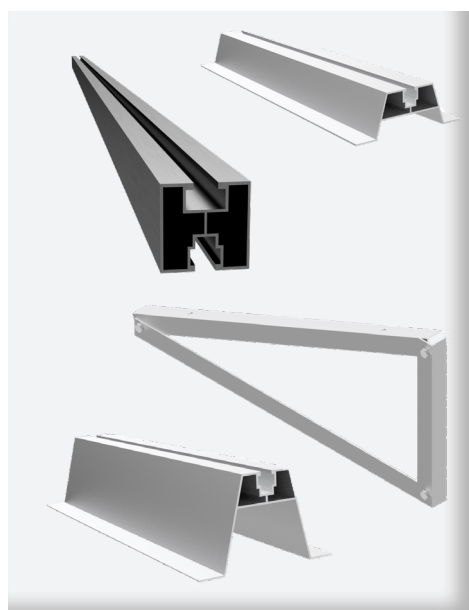
group XI



MOUNTING ELEMENTS

p. 4-6

group XII



SUPPORT ELEMENTS

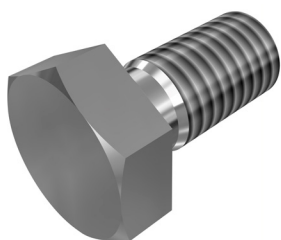
p. 7

group XIII

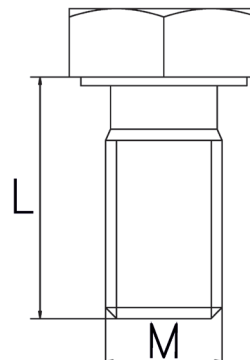
FASTENERS

grupa XI
fasteners

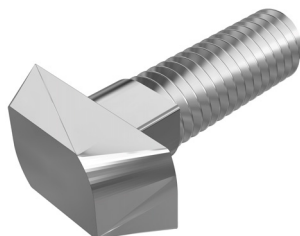
HEXAGON SCREW



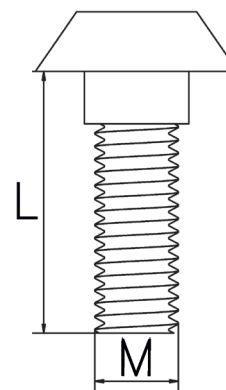
catalog No	material	M	L
AH110001IN	stainless steel	M8	16
AH110002IN		M10	20
AH110003IN		M10	25



HAMMERHEAD SCREW

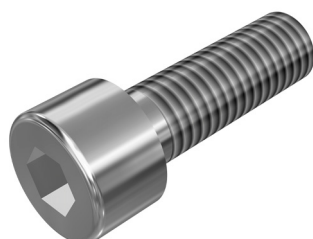


catalog No	material	M	L
AH110004IN	stainless steel	M10	25

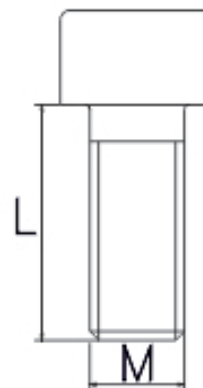


grupa XII
mounting elements

ALLEN KEY SCREW



catalog No	material	M	L
AH110005IN	stainless steel	M8	20
AH110006IN			25
AH110007IN			30

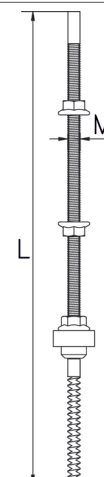


grupa XII
support elements

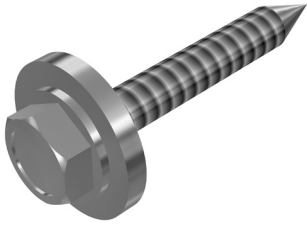
DOUBLE-THREAD SCREW



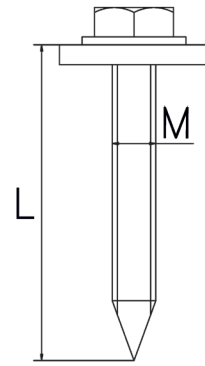
catalog No	material	M	L
AH110008IN	stainless steel	M10	200
AH110009IN			250
AH110010IN			300



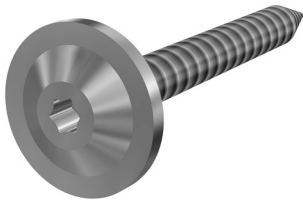
SELF-TAPPING SCREW WITH WASHER



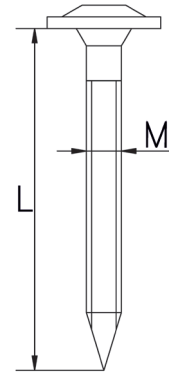
catalog No	material	M	L
AH110011IN	stainless steel	M6	25



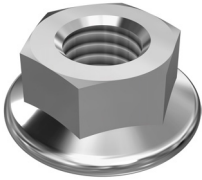
WOOD SCREW TCS



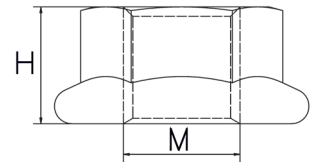
catalog No	material	M	L
AH110012IN	stainless steel	M8	60
AH110013IN			80



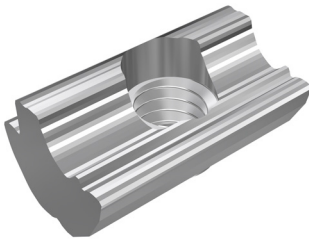
FLANGE NUT



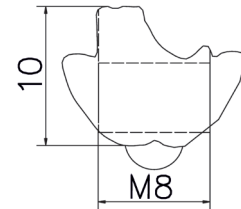
catalog No	material	M	H
AH110014IN	stainless steel	M8	10
AH110015IN		M10	



SLIDING DRAIN

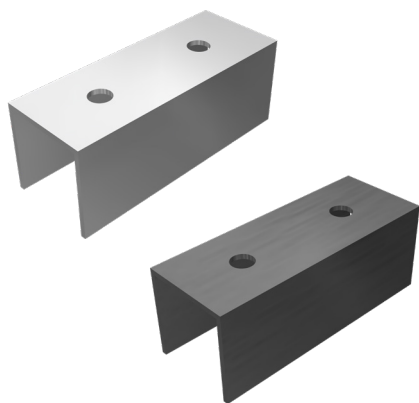


catalog No	material
AH110001AL	aluminium

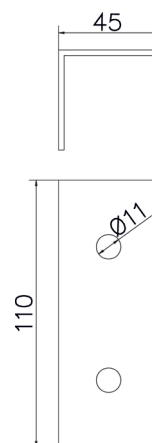


MOUNTING ELEMENTS

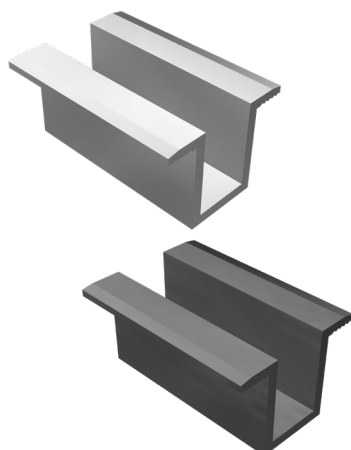
C110 CONNECTOR



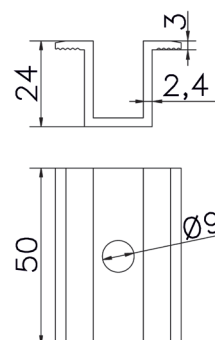
catalog No	material	color
AH120002AL	aluminium	silver
AH120003AL		black



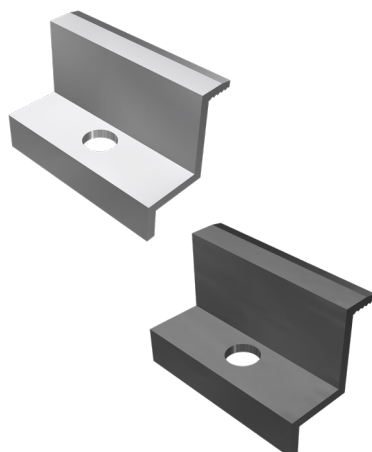
MIDDLE CLAMP



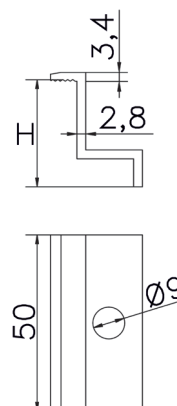
catalog No	material	color
AH120004AL	aluminium	silver
AH120005AL		black



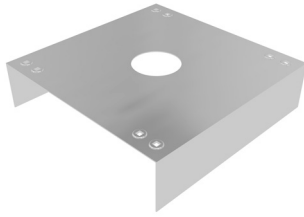
END CLAMP



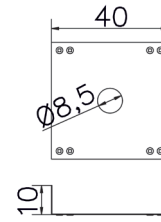
catalog No	material	H	color
AH120006AL	aluminium	30	silver
AH120011AL			black
AH120008AL		35	silver
AH120013AL			black



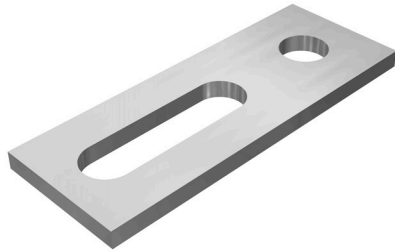
❖ GROUNDING PLATE



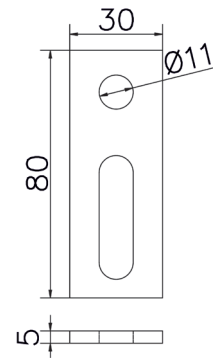
catalog No	material
AH120001IN	stainless steel



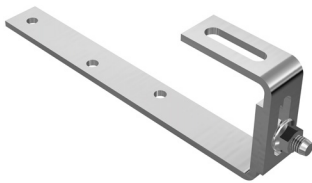
❖ ADAPTER



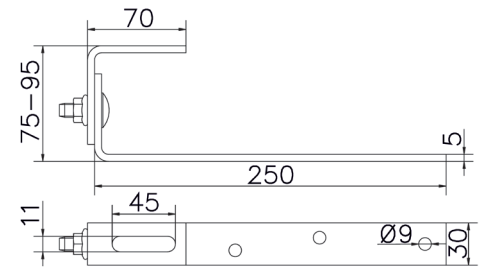
catalog No	material
AH120001IN	stainless steel



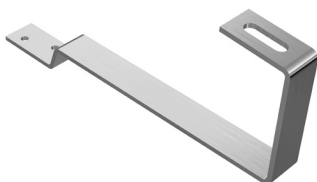
❖ HOOK TYPE „J” ADJUSTABLE



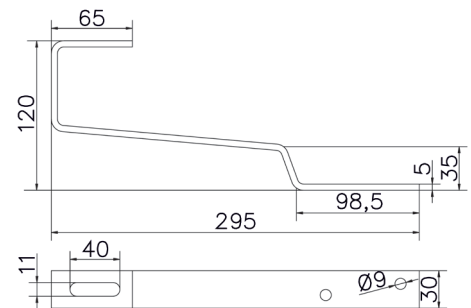
catalog No	material
AH120007IN	stainless steel



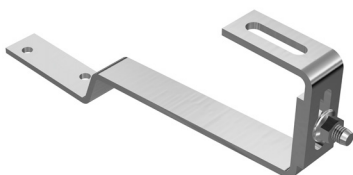
❖ HOOK TYPE „ZL”



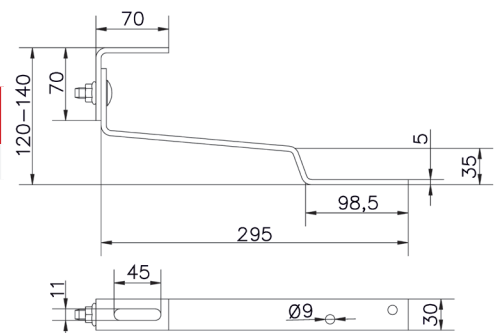
catalog No	material
AH120008IN	stainless steel



❖ HOOK TYPE „ZL” ADJUSTABLE



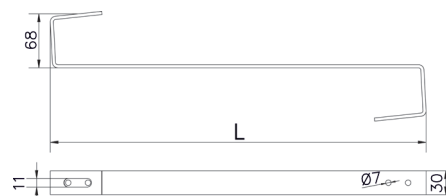
catalog No	material
AH120009IN	stainless steel



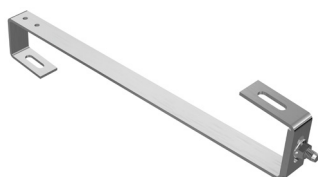
HOOK TYPE „S”



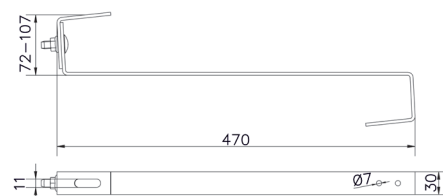
catalog No	material	L
AH120010IN	stainless steel	470
AH120011IN		500



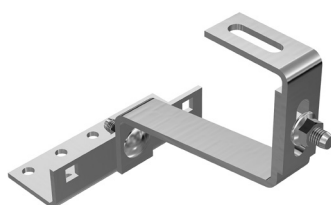
HOOK TYPE „S” ADJUSTABLE



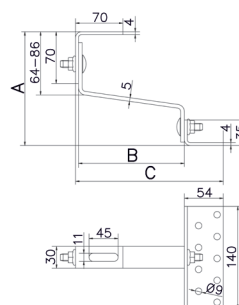
catalog No	material
AH120012IN	stainless steel



RAFTER HOOK AJDJUSTABLE



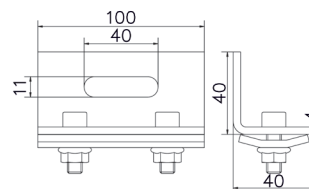
catalog No	material
AH120012IN	stainless steel



SEAM HOLDER

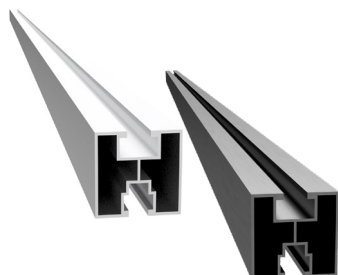


catalog No	material
AH120020IN	stainless steel

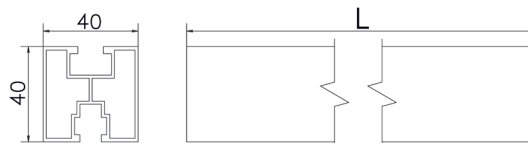


SUPPORT ELEMENTS

MOUNTING PROFILES



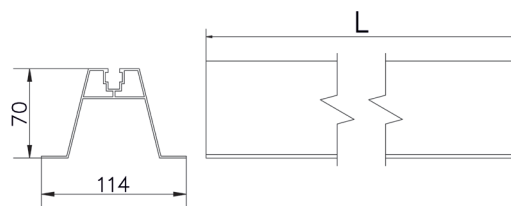
catalog No	material	L	color
AH130001AL	aluminium	4430	silver
AH130002AL		2210	black
AH130003AL		3325	silver
AH130005AL		6650	



HIGH TRAPEZOIDAL BRIDGE



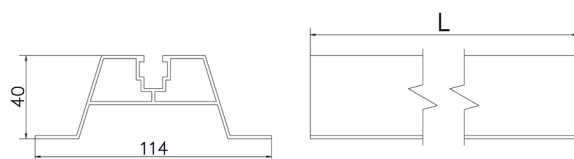
catalog No	material	L
AH130006AL	aluminium	470
AH130007AL		330



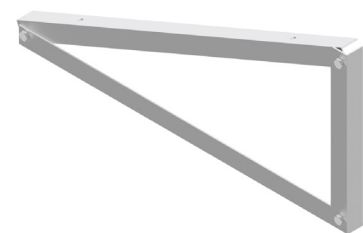
LOW TRAPEZOIDAL BRIDGE



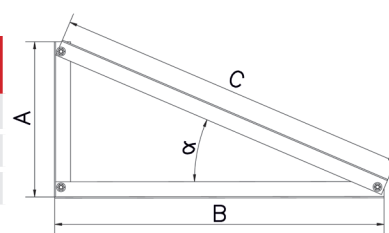
catalog No	material	L
AH130008AL	aluminium	470
AH130009AL		330



SMALL TRIANGLE



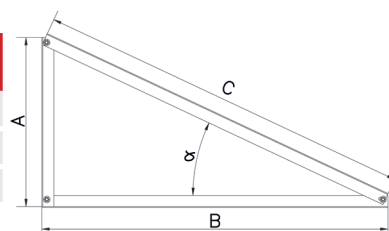
catalog No	material	α	A	B	C
AH130018AL	aluminium	25	380	810	890
AH130019AL		30	450	770	890
AH130021AL		15	240	860	890



BIG TRIANGLE



catalog No	material	α	A	B	C
AH130018AL	aluminium	25	560	1150	1400
AH130019AL		30	683	1150	1400
AH130021AL		15	374	1352	1400





AH Hardt sp.j.

Cholerzyn 215

32-060 Liszki

biuro@ah.com.pl



en.ah.com.pl