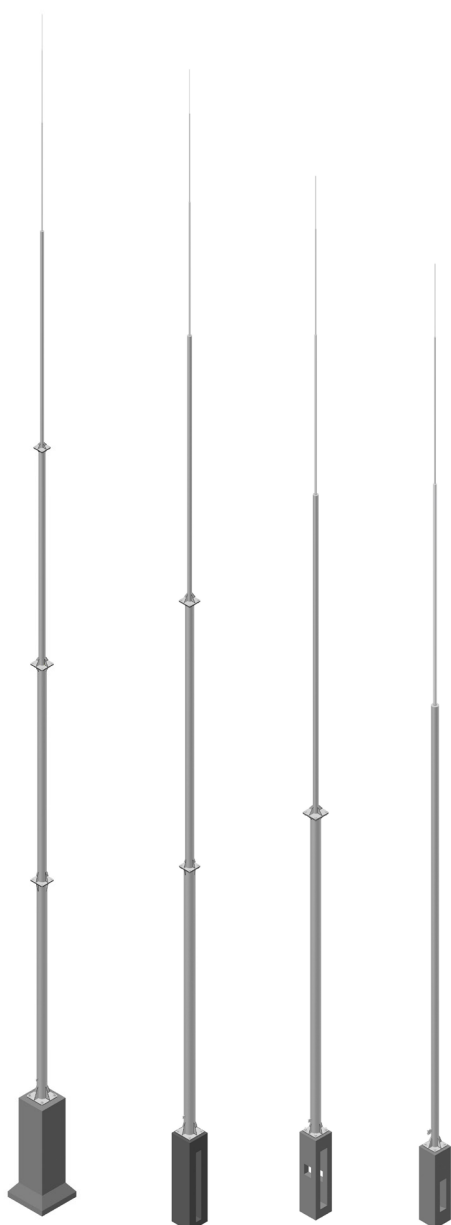


**EFFECTIVE AND RELIABLE LIGHTNING PROTECTION**



**VERTICAL AIR TERMINALS  
ON FOUNDATION**



group VII  
air termination  
system

# AIR TERMINATION SYSTEM

are used to protect equipment and metal roof components by intercepting the direct current of a lightning strike and diverting it to the lightning conductor system

Vertical air terminals on foundation AH Hardt  
 – effective protection of facilities with explosion-hazard zones

## Safety in accordance with standards

The Building Act and PN-EN 62305 require the use of external lightning protection systems (LPS) on buildings, including those at risk of explosion. The design of such systems is extremely demanding – it is essential to maintain appropriate separation distances and to meet the stringent requirements of the standards.

## Why choose our solution?

Standard lightning protection components often fail to meet requirements for tall structures with complex designs and significant economic importance (e.g. biogas plants, explosives storage facilities).

That is why AH Hardt offers lightning rods mounted on prefabricated bases, up to 30 metres in height, which:

- comply with the requirements of standard PN-EN 62305-3; 2025-09
- are used in designs based on the rolling sphere method, ensuring an appropriate separation distance
- are constructed from materials selected on the basis of calculations in accordance with Eurocode (SGN)

## Benefits for the investor:

- maximum security for the facility
- compliance with applicable regulations and standards
- a solution designed specifically for high-risk facilities



Strefa	H m n.p.m	V <sub>k</sub> m/s
I	≤300	22
II	≤500	25
	≤600	26
	≤950	30

## ❖ VERTICAL AIR TERMINALS ON FOUNDATION

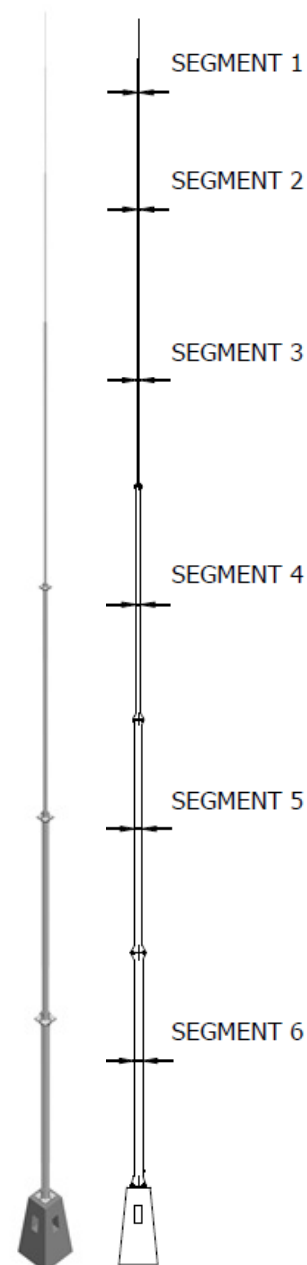
### ❖ Vertical air terminal on foundation, wind zone I

❖ The dimensions of the vertical air terminal have been calculated for the Ultimate Limit States (ULS) with a safety factor of 1.5 for a basic wind speed of 22 m/s, in accordance with standard PN-EN 1991-1-4

❖ Vertical air terminal can be installed in wind zone I (up to 300 metres above sea level) on any type of ground (with no restrictions on soil type)

❖ material of vertical air terminal: hot-dip galvanised steel, aluminium

catalog No.	height [mm]	vertical air terminal components						foundation	weight [~kg]
		segment L6 [mm]	segment L5 [mm]	segment L4 [mm]	segment L3 [mm]	segment L2 [mm]	segment L1 [mm]		
AH070001F	6000	-	-	-	-	3000	3000	250x250x1000mm, 100kg	113
AH070002F	7500	-	-	-	1500	3000	3000		120
AH070003F	9000	-	-	-	3000	3000	3000		130
AH070004F	10500	-	-	-	4500	3000	3000		134
AH070006F	12000	-	-	-	6000	3000	3000		148
AH070008F	13500	-	-	6000	1500	3000	3000		179
AH070010F	15000	-	-	6000	3000	3000	3000		185
AH070012F	16500	-	-	6000	4500	3000	3000		192
AH070014F	18000	-	-	6000	6000	3000	3000	350x350x1500mm, 263kg	384
AH070016F	19500	-	6000	6000	1500	3000	3000		422
AH070018F	21000	-	6000	6000	3000	3000	3000	430x430x1600mm, 335kg	440
AH070020F	22500	-	6000	6000	4500	3000	3000		545
AH070022F	24000	-	6000	6000	6000	3000	3000	470x470x2000mm, 780kg	580
AH070024F	27000	6000	6000	6000	3000	3000	3000		1096
AH070026F	30000	6000	6000	6000	6000	3000	3000	600(1000) x600(1000) x2000mm, 2250kg	2663



## VERTICAL AIR TERMINALS ON FOUNDATION

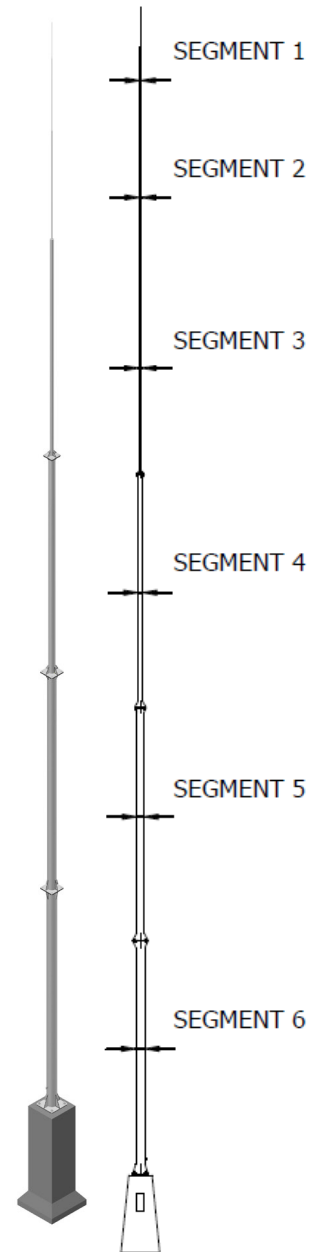
Vertical air terminal on foundation, wind zone I, II and III

The dimensions of the vertical air terminal have been calculated for the Ultimate Limit States (ULS) with a safety factor of 1.5 for a basic wind speed of 30 m/s, in accordance with standard PN-EN 1991-1-4

Vertical air terminal can be installed in wind zone I,II and III (up to 905 metres above sea level) on any type of ground (with no restrictions on soil type)

material of vertical air terminal: hot-dip galvanised steel, aluminium

catalog No.	height [mm]	vertical air terminal components						foundation	weight [~kg]
		segment L6 [mm]	segment L5 [mm]	segment L4 [mm]	segment L3 [mm]	segment L2 [mm]	segment L1 [mm]		
AH070001F	6000	-	-	-	-	3000	3000	250x250x1000mm, 100kg	113
AH070002F	7500	-	-	-	1500	3000	3000		120
AH070003F	9000	-	-	-	3000	3000	3000		130
AH070005F	10500	-	-	-	4500	3000	3000		152
AH070007F	12000	-	-	-	6000	3000	3000		165
AH070009F	13500	-	-	6000	1500	3000	3000	350x350x1500mm, 263kg	356
AH070011F	15000	-	-	6000	3000	3000	3000		374
AH070013F	16500	-	-	6000	4500	3000	3000		406
AH070015F	18000	-	-	6000	6000	3000	3000		453
AH070017F	19500	-	6000	6000	1500	3000	3000	430x430x1600mm, 335kg	553
AH070019F	21000	-	6000	6000	3000	3000	3000	470x470x2000mm, 780kg	1016
AH070021F	22500	-	6000	6000	4500	3000	3000		1076
AH070023F	24000	-	6000	6000	6000	3000	3000		1123
AH070025F	27000	6000	6000	6000	3000	3000	3000	600(1000) x600(1000) x2000mm, 2250kg	2641
AH070027F	30000	6000	6000	6000	6000	3000	3000	750(1100) x750(1100) x2750mm, 3850kg	4430







**AH Hardt sp.j**  
Cholerzyn 215  
32-060 Liszki  
biuro@ah.com.pl  
Poland

[en.ah.com.pl](http://en.ah.com.pl)